



NWFC

**M
A**



18

WELCOME NWFC ANNUAL MEETING

ASPIRE - INSPIRE - PERSPIRE

AGENDA

5/18/2018

**IF YOU HAVE QUESTIONS
THAT DON'T GET ANSWERED
DURING THE AGENDA,
PLEASE WRITE THEM ON THE
FLIP CHART PAPER POSTED
ON THE WALL. ANSWERS
WILL BE POSTED TO INFORM
ALL MEMBERS.**

6:30-6:35

WELCOME

6:35-6:45

THANK YOU VOLUNTEERS

6:45-7:00

COMMITTEE REPORTS

7:00-7:10

BOARD ELECTIONS

7:10-7:20

NWFC NEXT

7:20-7:30

HOW YOU CAN "BE NEXT"

7:30-7:40

COACH UPDATES AND REFLECTION

7:40-8:20

LEAVE THE NEST CELEBRATION

8:20-8:30

CLOSING - CAKE AND A TOAST TO CELEBRATE

8:30-?

TIME FOR PHOTOS AND CLEAN UP



That 70's Party 2017



Winternational Potluck 2018



Star Wars 2017

THANKS TO
ALL OUR
VOLUNTEERS

FOUR+ DECADES
HUNDREDS OF
VOLUNTEERS
THOUSANDS OF HOURS

MEMBER HUB

WWW.NWFENCING.ORG

NEW: Member Handbook – A to Z at NWFC
NEW: Volunteer Needs

Blood Drive
NW Fencing Center
American Red Cross Bus

4950 SW Western Avenue
Beaverton, OR 97005

Saturday, June 16th
10:00 AM to 3:30 PM

URGENT

SUMMER CAMP HOUSING NEEDS

PRE-NATIONALS Jun 20-24

FOIL INTERNATIONAL Jul 23-28

EPEE INTERNATIONAL Jul 30-Aug 4

PLEASE SIGN UP TONIGHT!

COMMITTEE REPORTS

GRANTS

- A SOURCE FOR FINANCIAL SUPPORT FOR HIGH LEVEL NWFC FENCER TRAVEL
- TWO GRANTS AWARDED THIS SEASON

SCHOLARSHIPS

- A SOURCE OF TUITION SUPPORT FOR NWFC MEMBER FENCERS
- FIVE FAMILIES RECEIVED SCHOLARSHIP AWARDS THIS SEASON

BOTH FUNDED THROUGH ANNUAL MEMBERSHIP DUES
NWFC IS AN 501 (c)3 CHARITABLE ORGANIZATION

COMMITTEE REPORTS

FINANCE

- WORK WITH ED, BOARD, AND BOOKKEEPING/ACCOUNTING TO PLAN AND MONITOR FINANCIAL HEALTH
- FOLLOW NONPROFIT ACCOUNTING STANDARD PRACTICES

FUNDRAISING

- WORK WITH ED AND BOARD TO PLAN AND STRATEGIZE FUNDRAISING NEEDS AND OPPORTUNITIES
- SUCCESSES THIS YEAR TO BUILD ON ESPECIALLY FOR CAPITAL CAMPAIGN

INTERESTED IN HELPING?

TALK TO US TONIGHT!

NWFC NEXT

- NWFC is a growing, vibrant community striving to help fencers achieve their goals by delivering high quality training and a community to match.
- As the lease term wound down, other sites were reviewed to determine the best location for the NWFC's next twenty years.
- Compared to other locations, our current building offered the best of both worlds – a stable affordable space and a place to grow.
- NWFC signed a lease extension for a ten-year term beginning 1/1/18, which included the first right of refusal option for the current billiards space.
- NWFC NEXT takes the 21,714sf - 13,846sf current space and adds 7868sf from the billiards.

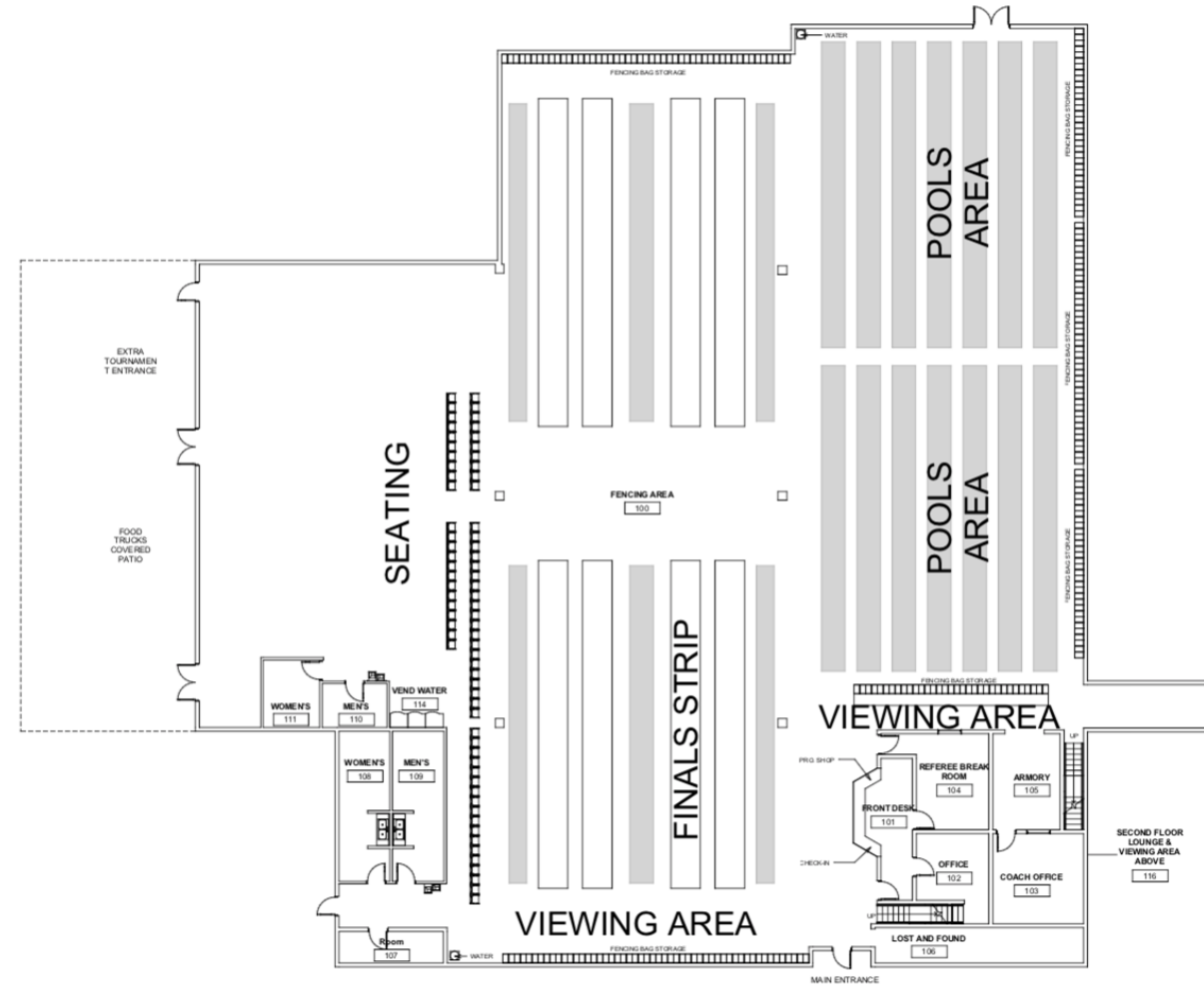
NWFC NEXT DEMO



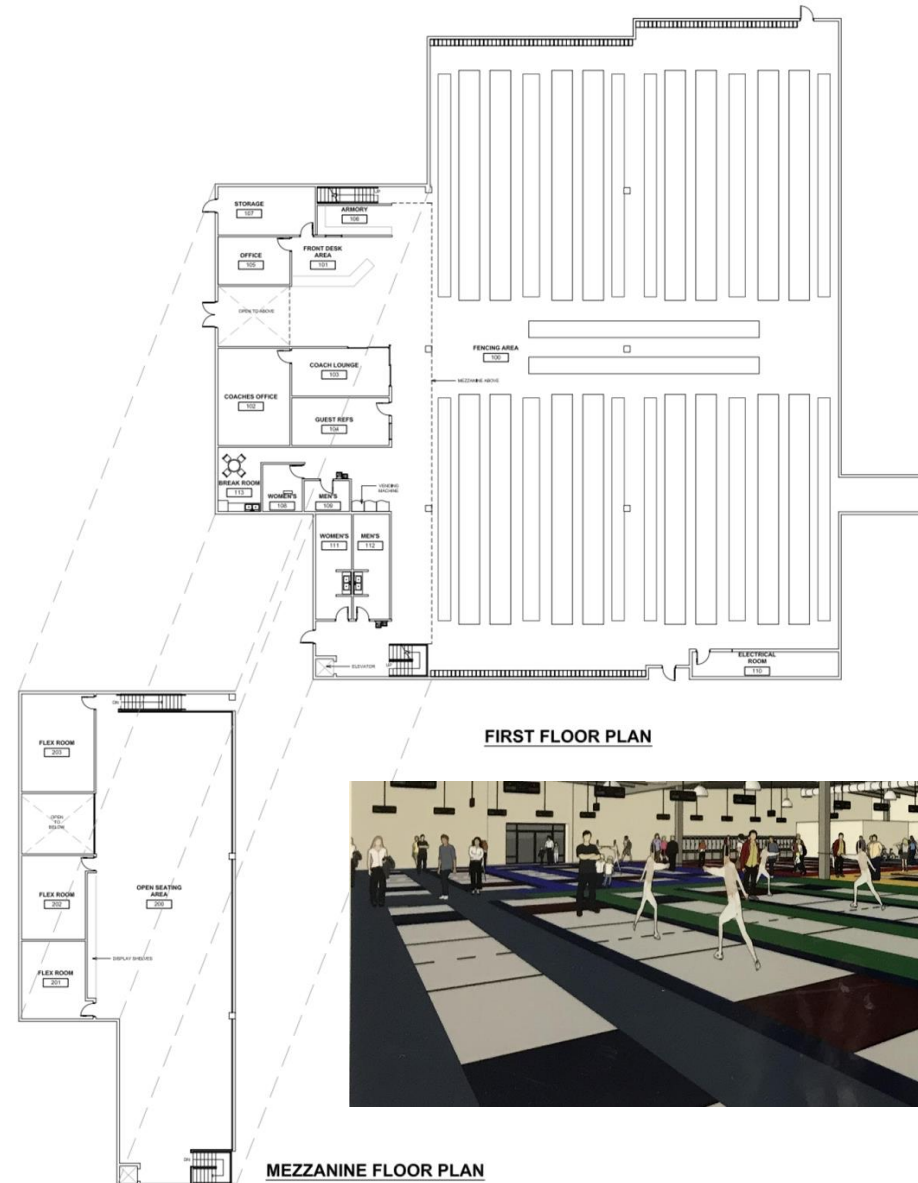
NWFC NEXT PHASE ONE

JUN 1 – AUG 20, 2018

- 14 new strips including 8 competition strips
- Open area for spectators and “pit of despair”
- 2 more restrooms
- Covered canopy area
- More visual exposure/signage



NWFC NEXT PHASE TWO & THREE



- 30 strips including 16 competition
- New front entrance
- New admin and spectator spaces

NWFC IS A 501(C)3 NON-PROFIT CHARITABLE ORGANIZATION

DONATIONS ALLOW US TO KEEP CLASS FEES
AFFORDABLE, SUPPORT OUR ATHLETES AT
NATIONAL AND INTERNATIONAL COMPETITION,
AND KEEP OUR FACILITIES UP-TO-DATE.

AUGUST BRIDGE

NWFC CLOSED FOR CONSTRUCTION DURING AUGUST, FENCERS NOT CHARGED TUITION IN AUGUST.

OPERATIONAL EXPENSES REMAIN.

PLEASE HELP BRIDGE THE MONTH OF AUGUST BY DONATING WHAT WOULD HAVE BEEN YOUR AUGUST TUITION, DONATE PART, ALL, OR MORE!

TWO GOALS:

BRIDGE \$20,000

100% PARTICIPATION REGARDLESS OF AMOUNT

CAPITAL CAMPAIGN

YOU CAN BE NEXT

- This is a fund-as-we-go expansion.
- Fundraising strategy includes outreach to members, alumni, fencing partners (clubs and corporate), and more.
- Various ways members can contribute financially.
- Let's talk about what works for you!

COACHES UPDATE

SIMON ABRAM & CODY MATTERN

SEASON HIGHLIGHTS

SMOOTH COACHING TEAM TRANSITION

YOUTH TWO CURRICULUM REDESIGN

ATHLETE SUCCESSES YOUTH TO VETS

STRONGER CLUB COMMUNITY SPIRIT

GOALS:

PREPARE YOUTH FENCERS FOR NEXT LEVELS AT THEIR PROPER PACE

FULLY UTILIZE NEW SPACE BY CONTINUING TO GROW PUBLIC EVENTS AND OUTREACH TO
WELCOME MORE MEMBERS AND FRIENDS

SUPPORT ADULT FENCER PROGRAMS

NWFC

**M
A 20**



**T
E 18**

LEAVING
THE NEST
CELEBRATION
& SLIDE SHOW

[HTTPS://YOUTU.BE/N7F84GVG8YA](https://youtu.be/N7F84GVG8YA)

NWFC
MAY 20
A 20
TE 18



AS YOU VENTURE
OUT OF THESE
WALLS, PLEASE
REMEMBER YOU
ARE **ALWAYS**
WELCOME HERE!

ASPIRE - INSPIRE - PERSPIRE

